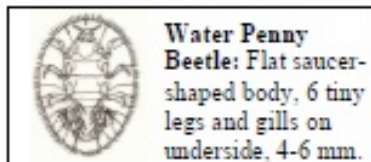
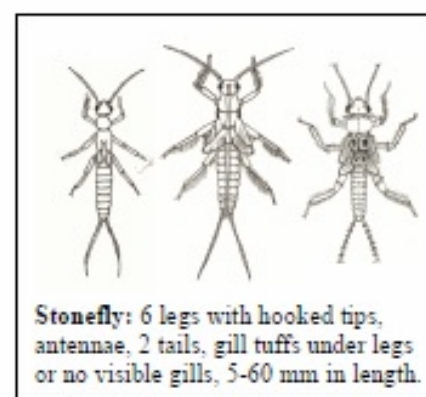
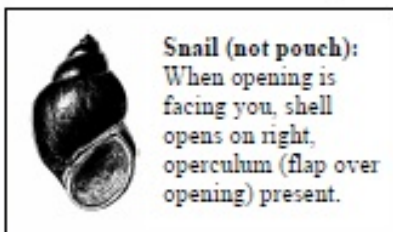
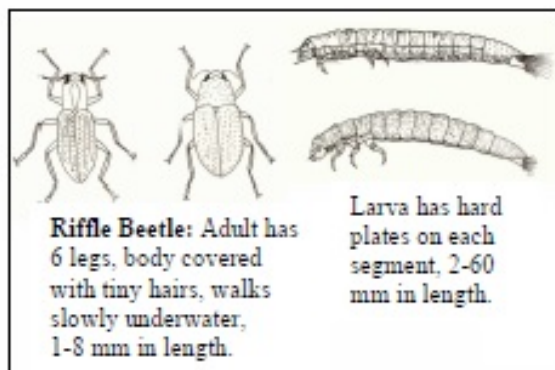
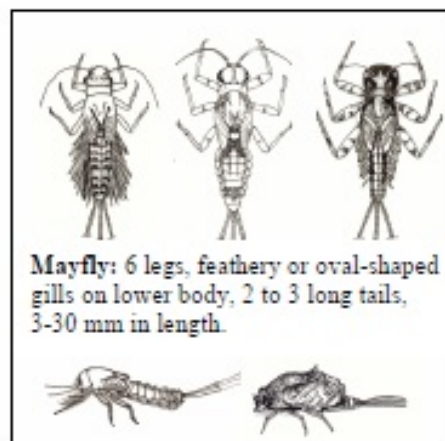
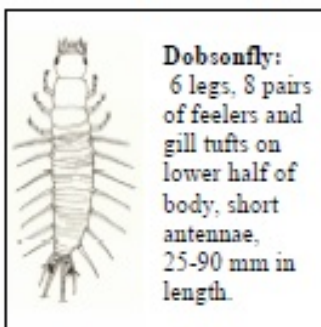
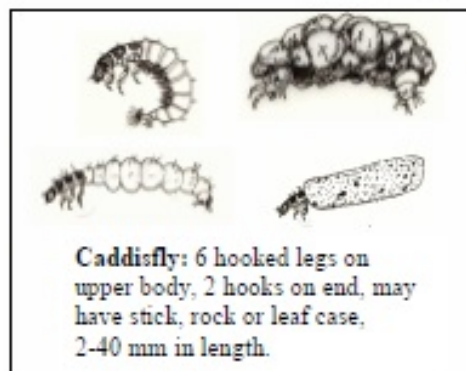
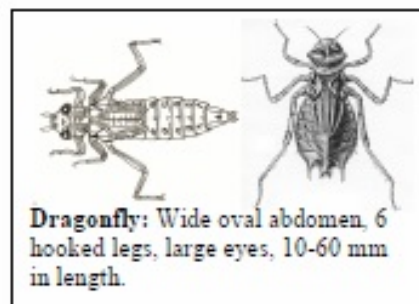
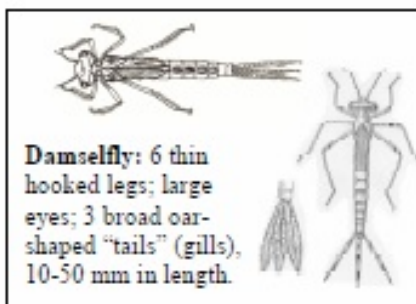
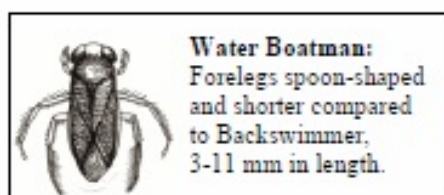
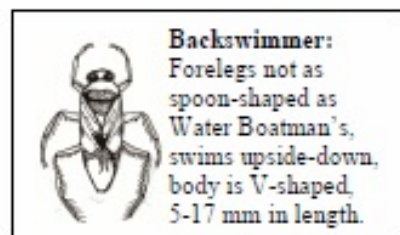
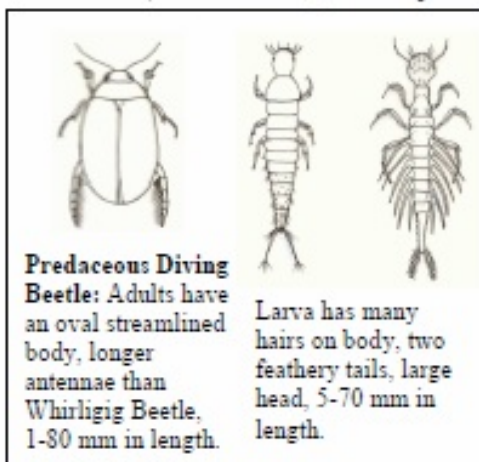
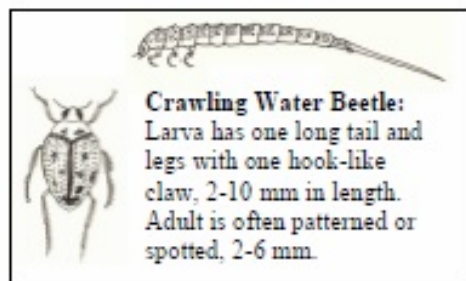


## IOWATER BENTHIC MACROINVERTEBRATE KEY

### Pollution Intolerant (High Quality Group)



### Somewhat Pollution Tolerant (Middle Quality Group)



## Somewhat Pollution Tolerant (Middle Quality Group) continued



**Crane Fly:** Milky, green, or light brown color, caterpillar-like segmented body, 4 finger-like lobes at back end, no visible head, 10-100 mm.



**Crawdad:** 2 large claws, 8 legs, up to 6 inches long.



**Mussels/Clams:** Fleishy body enclosed between 2 clamped shells (bivalve), 2-250 mm.



**Scud:** White to grey, more than 6 legs, swims sideways, body higher than wide, 5-20 mm



**Water Scorpion:** Raptor-like forelegs for catching prey, long breathing tube, stick-like long body, 15-45 mm.



**Giant Water Bug:** Raptor-like forelegs for catching prey, leathery textured, oval body, 15-65 mm in length.



**Sowbug:** Gray body wider than it is high, more than 6 legs, 5-20 mm.



**Water Strider:** Slender body, long legs "walk" on water surface, 3-21 mm.

**Orbsnail:** One shell, coiled and flattened, a.k.a. rams-horn, 3-30 mm



**Alderfly:** Looks like a small Dobsonfly but has one long tail and no gill tufts, 10-25 mm.

**Water Mite:** 8 legs, round body, may be brightly colored, 2-3 mm



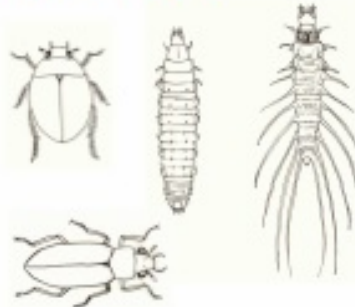
**Limpet:** One shell, not coiled, shaped like a flat cone 3-7 mm

## Pollution Tolerant (Low Quality Group)



**Mosquito:** Head has small mouth brushes and short antennae; abdomen has breathing siphon, surfaces for air, 4-12 mm.

**Water Scavenger Beetle:** Adult may or may not be streamlined, most have no hairs on legs, short clubbed antennae, 1-40 mm. Larva have short antenna, 8 soft body segments, 4 -60 mm.



**Pouch Snail:** When opening is facing you, shell opens on the left, no operculum (flap over opening).

**Flatworm (Planarian):** Flat, soft-bodied worm with arrowhead-shaped head, 1-30 mm in length.



**Midge Fly:** Small, dark head, 2 tiny legs on each end, 2-20 mm.



**Bloodworm:** One type of midge fly, has a red body due to hemoglobin.



**Aquatic Worm:** Thin, worm-like, 0.5-700 mm.



**Leech:** Brown, slimy body, suction pads on body, 5-400 mm.

**Rat-tailed Maggot:** Worm-like, soft-bodied with long breathing tube, semi-transparent skin, 4-70 mm.

