



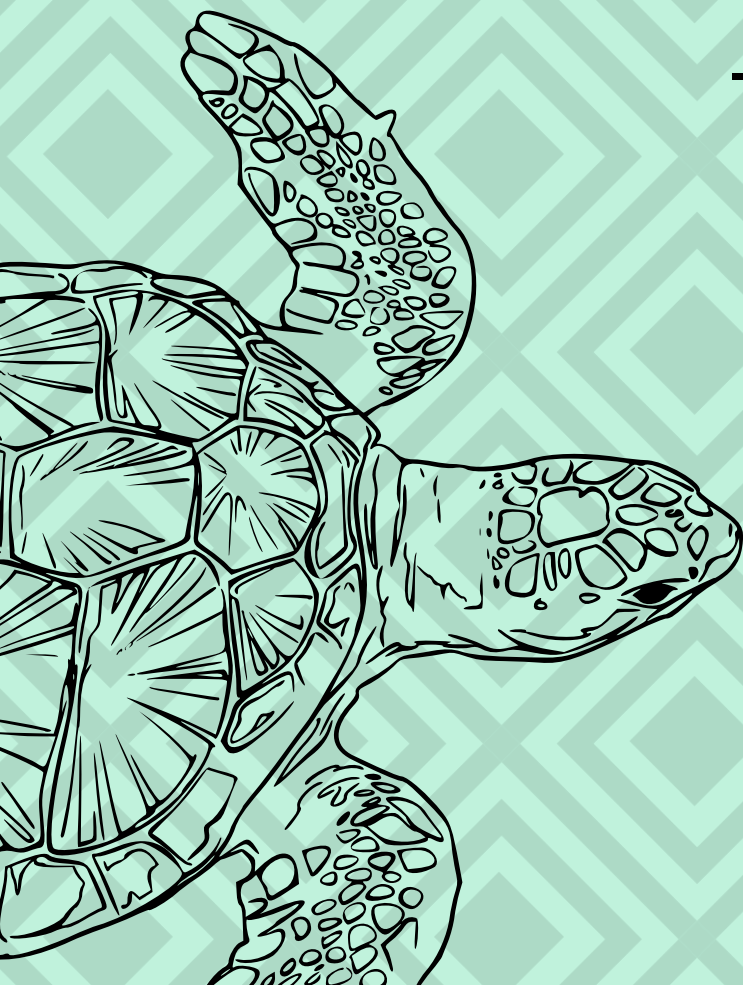
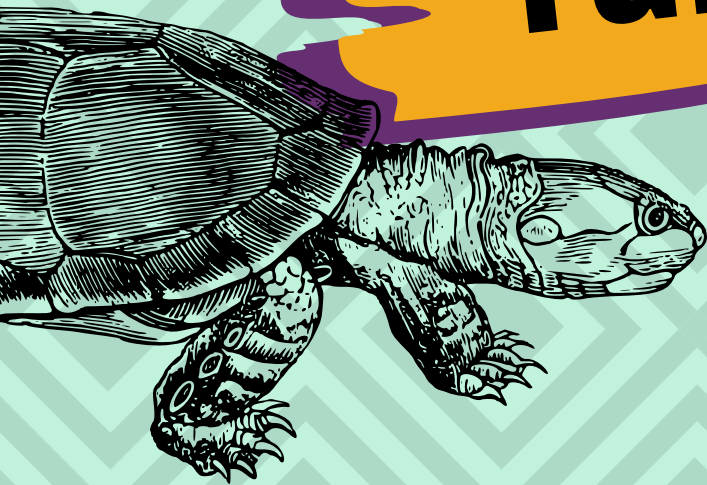
Sac County Conservation
KneeHigh Naturalist



Turtle Kit

What's In Here?

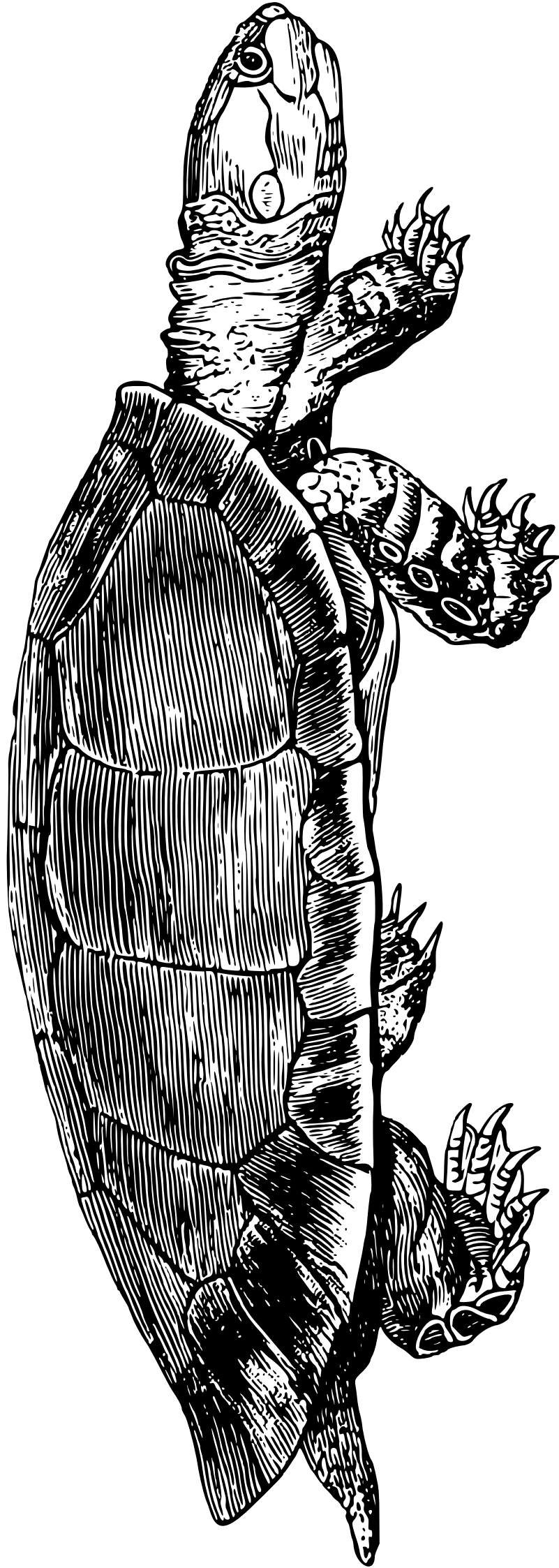
- An Activity Booklet
- A Snack
- A Turtle Craft
- A Cold Blooded Sun Activity
- A Sticker





Turtle Craft

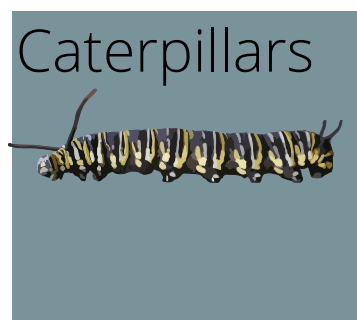
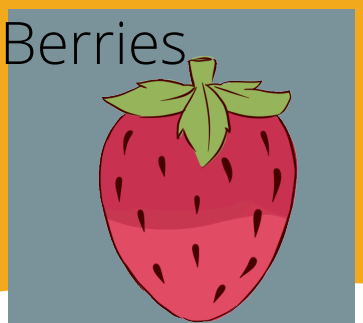
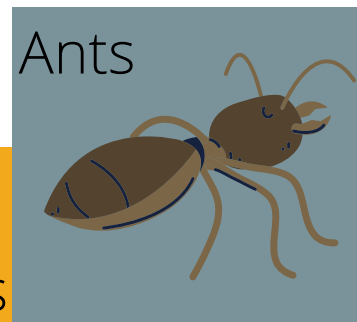
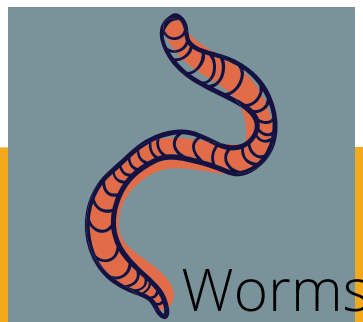
AFTER ENJOYING YOUR CUP OF FRUIT USE THAT TO CREATE A SHELL OF YOUR OWN TURTLE. USE THE GLUE DOTS TO ATTACH PAPER TO THE INSIDE OF YOUR CUP. THEN USE THE REMAINING GLUE DOTS TO ATTACH YOUR SHELL TO YOUR TURTLES BODY!



Turtle Activities

IN YOUR BAG IS A LITTLE BAG OF PIECES OF COLORED PAPER PUT THEM OUT IN THE SUNSHINE. THEN GO ON A HUNT FOR TURTLE FOOD! TURTLES ARE OMNIVORES SO THEY LIKE TO EAT INSECTS(BUGS), WORMS, BERRIES. SEE IF YOU CAN FILL IN YOUR BINGO SHEET. THEN GO BACK TO YOUR PIECES OF PAPER AND SEE WHICH COLOR IS THE WARMEST. TURTLES GET THEIR WARMTH FROM THE SUNSHINE. WHICH COLOR WOULD KEEP A TURTLE THE WARMEST? NOW TRY THE SAME THING IN THE SHADE AND SEE WHICH COLOR WOULD KEEP A TURTLE THE COOLEST.

Turtle Food Bingo





There Was A Little Turtle

THERE WAS A LITTLE TURTLE. (MAKE A FIST IN ONE HAND)
HE LIVED IN A BOX. (MAKE A BOX WITH BOTH HANDS)
HE SWAM IN A PUDDLE. (MAKE SWIMMING MOTIONS)
HE CLIMBED ON THE ROCKS. (HAVE THE FINGERS ON ONE HAND CLIMB UP
THE OTHER ARM)
HE SNAPPED AT A MOSQUITO. (CLAP HANDS)
HE SNAPPED AT A FLEA. (STICK OUT TONGUE)
HE SNAPPED AT A MINNOW. (DIP HAND DOWN TO CATCH A FISH)
HE SNAPPED AT ME. (POINT TO SELF)
HE CAUGHT THE MOSQUITO. (GRAB WITH HAND)
HE CAUGHT THE FLEA. (GRAB WITH HAND)
HE CAUGHT THE MINNOW. (GRAB WITH HAND)
BUT HE DIDN'T CATCH ME! (RUN AWAY)

(ORIGINAL POEM: "THE LITTLE TURTLE" BY VACHEL LINDSAY (1879-1931),
WITH THE NOTE, "A RECITATION FOR MARTHA WAKEFIELD, THREE YEARS
OLD")

Suggested Reading

Turtle Splash:

**Countdown at the Pond
by Cathryn Falwell**

Frogs Toads and Turtles

by Diane L. Burns

Look Out For Turtles

**by Melvin A. Berger, Megan
Lloyd (Illustrator)**

TURTLE'S OF IOWA



THERE ARE OVER 356 DIFFERENT KINDS OF TURTLES AND THEY ALL HAVE ONE THING IN COMMON, A SHELL! A TURTLES SHELL IS A PART OF THEIR SKELETON, IT IS THEIR RIBS AND THEIR SPINE FUSED TOGETHER.



AS OMNIVORES THEY EAT BOTH MEAT AND PLANTS. FOR AQUATIC TURTLES THAT MIGHT MEAN TADPOLES, FISH, WORMS, BERRIES, AND LEAVES.

THEY ONLY
NEED TO
EAT A FEW
TIMES A
WEEK!



Reptiles have soft leathery eggs. They are born with an egg tooth to help them cut their way out of their egg.

THIS MEANS THEY HAVE A BACKBONE.

Vertebrates

Scales

Teeth

Claws

Cold
Blooded

Reptile

ALSO KNOWN AS A POIKILOTHERM WHICH MEANS THEY ABSORB HEAT FROM THEIR ENVIRONMENT.

TURTLES DO NOT HAVE TEETH. THEIR LIPS ARE MADE UP OF KERATIN WHICH IS WHAT FINGERNAILS ARE MADE OF TOO!



COMMON SNAPPING TURTLE

9 TO 18 INCHES



SAM STUKEL, U.S. FISH AND
WILDLIFE SERVICE

LIVE IN AQUATIC HABITATS

BOTH FOUND
THROUGHOUT
IOWA

BOTH LIVE
30 YEARS

PAINTED TURTLE

3 TO 9 INCHES



Turtles are cold blooded, meaning they are ectothermic, they get their heat from outside their bodies!

Try this fun activity to learn about the effects of the sun on different objects.

Take different colored sheets of paper and lay them in the sun and in the shade. Let them sit out for 15 minutes and try to see which is the warmest and which is the coolest. If you happen to have a infrared thermometer you could even measure the temperatures.

